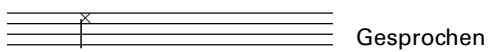
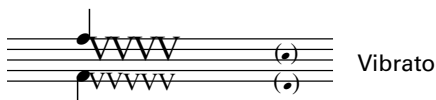


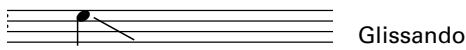
Tönende Atmung



Gesprochen



Vibrato



Glissando

Notes

In case of performance by female or children's choir, T and B 8^{va} higher.

T und B werden für Frauenchor zum oberen 8^{va} transponiert.

In case of performance by male voices, S and A 8^{va} lower.

S und A werden für Männerchor zum unteren 8^{va} transponiert.

Bitte nicht

Francesco Milita

Allegro ♩ = 120

S (1) *pp*
re - gen - bo - gen re - gen - bo - gen re - gen - bo - gen re - gen - bo - gen

A (2) *pp*
re - gen - bo - gen re - gen - bo - gen re - gen - bo - gen re - gen - bo - gen

T (3)

B (4)

3
re - gen - bo - gen re - gen - bo - gen re - gen - bo - gen re - gen - bo - gen

re - gen - bo - gen re - gen - bo - gen re - gen - bo - gen re - gen - bo - gen

mf
das wort

f
Ein wort in die Luft zu Wer - fen

4 *mf* *pp*
ist le - icht re - gen - bo - gen re - gen - bo - gen

mf *pp*
ist le - icht re - gen - bo - gen re - gen - bo - gen

f
schwer

mf
ist le - icht

6

re-gen-bo-gen re-gen-bo-gen re-gen-bo-gen re-gen-bo-gen

re-gen-bo-gen re-gen-bo-gen re-gen-bo-gen re-gen-bo-gen

mf das Zei - - - - - chen *f* un-mö-glich

f Ein Zei - chen in die Luft is - chen

7

mf un-mö-glich *mf* Sil-be auf Sil-be auf

mf un-mö-glich *mp* Ö-de

mp auf Strich auf Strich auf Strich Ar-co -

mp Ar-co-i-ris o - der Arc en ciel o - der

mf is nicht un-mö-glich *mp* Ar-co-i-ris o - der Arc en ciel o - der

11

Sil-be auf Sil-be zu ba - lan - ci - e - ren im-mer

i - ris o - der Arc en ciel o - der Rain-bow o - der Re - gen - bo - gen

Rain - bow o - der Re-gen-bo-gen Re - gen-bo-gen Re-gen-bo-gen Re-gen-bo-gen

Rain - bow o - der Re-gen-bo-gen Re - gen-bo-gen Re-gen-bo-gen Re-gen-bo-gen

14 *f* *sfz* *p*

hö - her und hö - her aah! _____

f _____ 0

Re - gen - bo - gen zu set - zen _____

f _____ 0

8 Re-gen-bo-gen Re-gen-bo-gen zu set - zen _____

f *sfz*

Re-gen-bo-gen Re-gen-bo-gen zu set - zen aah! _____

18 *mp* *mp* *p*

A - ber sel - ber so le - icht zu wer - den wie ein

mp

A - ber sel - ber so le - icht zu wer - den

p

wie ein Strich

p

ei - ne Sil - be

22 *p*

Strich ei - ne Sil - be ein Zei - chen o - der ein ...

p

wie ein Strich ei - ne Sil - be ein Zei - chen o - der ein ... re - gen - bo - gen

p

re - gen -

26

mf am Him-mel ei - ne mi - nu - te lang

re - gen - bo - gen re - gen - bo - gen re - gen -

p aah!

mf bo - gen am Him-mel ei - ne mi - nu - te lang

31

mf zu schwe - ben ist schwer

Aah!

bo - gen re - gen - bo -

pp zu schwe - ben ist schwer

36 $\text{♩} = 72$

ff Un - mö - glich Un - mö - glich Un -

f Un -

ff o - ben o - ben o - ben o - ben o - ben o - ben o - ben o - ben