

# GLORIA

for Mixed Choir and Eight Brass Instruments  
Op. 40

Egil Hovland (1962)  
Revised 1979



Glo - ri - a in ex - cel - sis De - o.  
Æ - re væ - re Gud i det høy - e - ste.

$\text{♩} = 80$



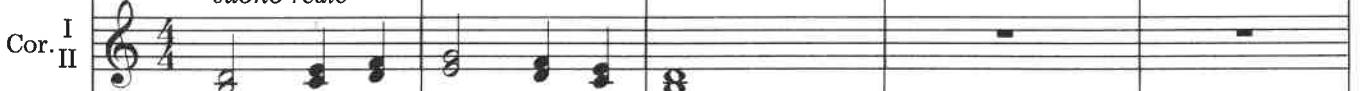
Et in ter - ra pax ho - mi - ni -  
Og fred på jor -

$\text{♩} = 80$

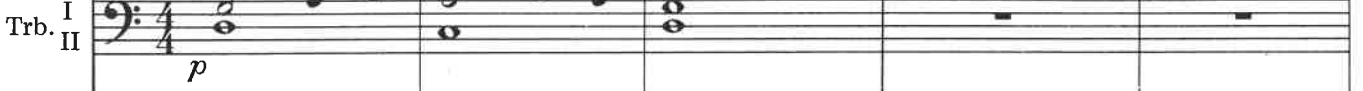
*suono reale*



*suono reale*



*p*



*p*

Trb. III



*p*

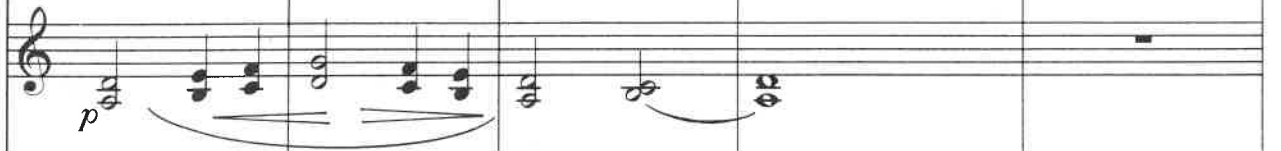


bus  
den

bo - nae vo - lun - ta - - - tis,  
blant men - nes - ker som har Guds vel - be - hag,



*p*



*p*



*p*



*p*

[A] ♩ = 100

S  
vo - lun - ta - tis.  
Guds vel - be - hag.

T  
B

Lau - Vi

♩ = 100

Tr. I  
II

Cor. I  
II

Trb. I  
II

Trb. III  
Tb.

*mf*

*mf*

*mf*

*mf*

S  
A

T  
B

Lau - da - mus, lau - da - mus  
Vi lo - ver, vi lo - ver

da - mus, lau - da - mus te.  
lo - ver, vi lo - ver deg.

Tr. I  
II

Cor. I  
II

Trb. I  
II

Trb. III  
Tb.

*mf*

*mf*

*mf*

*mf*

te.  
deg.

Be - ne - di - ci - mus  
Vi - vel - sig - ner

*f*

te. A - do - ra - mus te. mus te. Gra - -  
deg. Vi - til - ber deg. li - ger deg. Vi - brin - ger

*mp*

*mp*

Tb.  
*mp*

*f* *p*

- - ti - as a - gi - mus ti - bi propter mag - nam glo - ri - am tu - am.  
 takk frem for deg for din sto - re her - lig - hets skyld.

*f* *p*

*f* *mf* *p*

*f* *mf* *p*

Tb.

**B** *f*

Do - mi - ne De - us, Rex coe - le - stis, De - us  
 Her - re Gud, him - melske kon - ge, Gud, all -

*f*

*mf* *mf* *f*

*mf* *f*

Tb. *f* III

Pa - ter om - ni - po - tens. Do - mi - ne Fi - - - li u - ni - ge - ni - te  
mek - ti - ge Fa - der. Her - re, du en - bår - ne Sønn, Je - sus Kris - tus,

I  
III  
C

Je - - - - su Chri - ste.  
Je - - - - sus Kri - stus.

I  
II  
Tb.

$\text{♩} = 88$

*p* Do - mi - ne De Ag - nus De - i,  
 Her - re Gud, du Guds Lam,

*p*

*mp*

Tb. *p*

*mp*

Fi - - li - us Pa - - tris.  
 Sønn av Fa - de - ren,

*pp*

Qui tol - lis pec -  
 du som -

*p* *p*

*mp* *p* *pp* *pp* *pp*

*pp*

mi - se - re - re — no - bis.  
 mis - kun - ne deg o - ver oss.

*pp* Qui tol - lis pec -  
 Du — som —

ca - ta mun - di, — *pp*  
 tar bort verdens syn - der, —

*pp*

*pp*

*pp*

S  
A

*pp*

ca - ta mun - di, — sus - ci - pe de - pre - ca - ti o - nem nos - tram. —  
 tar bort ver - dens syn - der, — ta — i - mot vår yd - my - ke be - gjæ - ring. —

T  
B

*pp*

Trb. I  
II

Trb. III  
Tb.

**D**

S *mp* mi - se - re - - re no -  
mis - - kun - - ne deg o - ver

A *mp* Qui se - des ad dex - te - ram Pa - tris, mi - se - re - - re,  
Du som sit - ter ved Fa - derens høy - re hånd, mis - kun - - ne deg,

T *mp* mi - se - re - - re no -  
mis - - kun - - ne deg o - ver

B *mp* Qui se - des ad dex - te - ram Pa - tris, mi - se - re - - re,  
Du som sit - ter ved Fa - derens høy - re hånd, mis - kun - - ne deg,

Tr. I *mp*

Cor. I *mp*

Trb. I *mp*

Trb. III  
Tb.



*p*  
bis, mi - se - re - - re no - bis.  
oss, mis-kun - ne deg o - ver oss.

*p*  
mi - se - re - - re no - bis, no - bis.  
mis-kun - ne deg o - ver oss, o - ver oss.

*p*  
bis, mi - se - re - - re no - bis.  
oss, mis-kun - ne deg o - ver oss.

*p*  
mi - se - re - - re no - bis, no - bis.  
mis-kun - ne deg o - ver oss, o - ver oss.

I  
*p*

I  
*p*

I  
*p*

**E**

♩ = 100

S  
A

Quo-ni-am tu so-lus sanc-tus.  
For du a-le-ne er hel-lig.

T  
B

*p*

♩ = 100

Tr. I  
II

Cor. I  
II

Trb. I  
II

Trb. III  
Tb.

*p*

*mf*

Tu — so — lus — Do-mi-ni  
Du a - le - ne er Her -

Tu — so — lus Al -  
Du a - le - ne er den

*mf*

*mf* *p*

*mf* *p*

*mf* *p* *mf* *p*

*mf* *p* *mf* *p*

*f* *f* *f*  
 tis - si - mus, Je - - su Chri - ste. Cum —  
 høy - es - te, Je - - sus Kri - stus, med Den

*mf* *mf*  
*mf* *mf*  
*mf* *mf*  
*mf* *mf*

**F**

*ff*

S  
 Sanc - to Spi - ri - tu, in glo - ri - a De - i  
 Hel - li - ge *And.* i Gud Fa - de - rens

A  
 Sanc - to Spi - ri - tu, in  
 Hel - li - ge *And.* i

T  
 Sanc - to Spi - ri - tu, in glo - ri -  
 Hel - li - ge *And.* i Gud

B  
 Sanc - to Spi - ri - tu,  
 Hel - li - ge *And.*

Tr. I  
 II *f*

Cor. I  
 II *f*

Trb. I  
 II *f*

Trb. III  
 Tb. *f*

*ff* Pa - tris, in glo - ri - a De-i Pa - tris, in  
 her - lig - het, i Gud Fa - de-rens her - lig - het, i

glo - ri - a De-i Pa - tris, in glo - ri - a De-i  
 Gud Fa - de-rens her - lig - het, i Gud Fa - de-rens

*ff* a De-i Pa - tris, in glo - ri - a De-i Pa - tris,  
 Fa - de-rens her - lig - het, i Gud Fa - de-rens her - lig - het,

*ff* in glo - ri - a De-i Pa - tris, in glo - ri -  
 i Gud Fa - derens her - lig - het, i Gud

glo - ri - a De - i Pa - tris, in glo - ri - a De - i  
 Gud \_\_\_\_\_ Fa - derens her - lig - het, i Gud \_\_\_\_\_ Fa - drens

Pa - tris, in glo - ri - a De - i Pa - tris, in  
 her - lig - het, i Gud \_\_\_\_\_ Fa - derens her - lig - het, i

\_\_\_\_\_ in glo - ri - a De - i Pa - tris, \_\_\_\_\_ in glo - ri -  
 \_\_\_\_\_ i Gud \_\_\_\_\_ Fa - derens her - lig - het, \_\_\_\_\_ i Gud \_\_\_\_\_

a De - i Pa - tris, \_\_\_\_\_ in glo - ri - a De - i Pa - tris, \_\_\_\_\_  
 Fa - de - rens her - lig - het, \_\_\_\_\_ i Gud \_\_\_\_\_ Fa - de - rens her - lig - het, \_\_\_\_\_

mf

mf

mf

mf

Pa - tris, in glo - ri - a De-i Pa - tris, in  
 her-lig - het, i Gud Fa - de-rens her-lig - het, i

glo - ri - a De-i Pa - tris, in glo - ri - a De-i  
 Gud Fa - de-rens her-lig - het, i Gud Fa - de-rens

a De-i Pa - tris, a De-i Pa - tris,  
 Fa - derens her-lig - het, Fa - derens her-lig - het,

in gl' glo - ri -  
 i Gud

*mp*

*mp*

*mp*

*mp*

glo - ri - a De - i Pa - tris, in glo - ri - a De - i,  
 Gud \_\_\_\_\_ Fa - de - rens her - lig - het, i Gud \_\_\_\_\_ Fa - de - rens,

Pa - tris, in glo - ri - a De - i Pa - tris, in  
 her - lig - het, i Gud \_\_\_\_\_ Fa - de - rens her - lig - het, i

\_\_\_\_\_ in glo - ri - a De - i Pa - tris, \_\_\_\_\_ in glo - -  
 \_\_\_\_\_ i Gud \_\_\_\_\_ Fa - de - rens her - lig - het, \_\_\_\_\_ i Gud \_\_\_\_\_

a De - i Pa - tris, \_\_\_\_\_ in glo - ri - a De - i Pa - tris.  
 Fa - de - rens her - lig - het, \_\_\_\_\_ i Gud \_\_\_\_\_ Fa - de - rens her - lig - het.

*p* *pp*

*p* *pp*

*p* *pp*

*p* *pp*



glo - ri - a De - i Pa - - tris.  
Gud Fa - de - rens her - - lig - - het.

glo - ri - a De - i Pa - - tris.  
Gud Fa - de - rens her - - lig - - het.

ri - a De - i Pa - - tris.  
Fa - de - rens her - - lig - - het.

Musical notation for four staves, including rests and chordal accompaniment.

G

♩ = 80

Musical score for the first system, measures 1-4. It consists of four staves. The top two staves are in treble clef, and the bottom two are in bass clef. The key signature is G major. The time signature is 4/4. The first two measures contain whole rests. The third measure begins with a dynamic marking of *p* and a chord marked 'A'. The fourth measure continues the melodic line with a slur over the notes. The bottom two staves provide harmonic support with chords and a bass line.

♩ = 80

Musical score for the second system, measures 5-8. It consists of four staves. The top two staves are in treble clef, and the bottom two are in bass clef. The key signature is G major. The time signature is 4/4. The first two measures are marked with *p* and *mp* dynamics. The third measure is marked with *p*. The fourth measure is marked with *pp*. The music features complex chordal textures and melodic lines across all staves, with dynamic markings and hairpins indicating volume changes.

S *pp*  
 men. A - - - - - men.

A *pp*  
 men. A - - - - - me - - - - - n.

T *p*  
 men.

B

Tr. I  
 II *pp*

Cor. I  
*pp* + +

Cor. II  
*pp*

Trb. I  
 II *pp*

Trb. III  
 Tb. *pp*